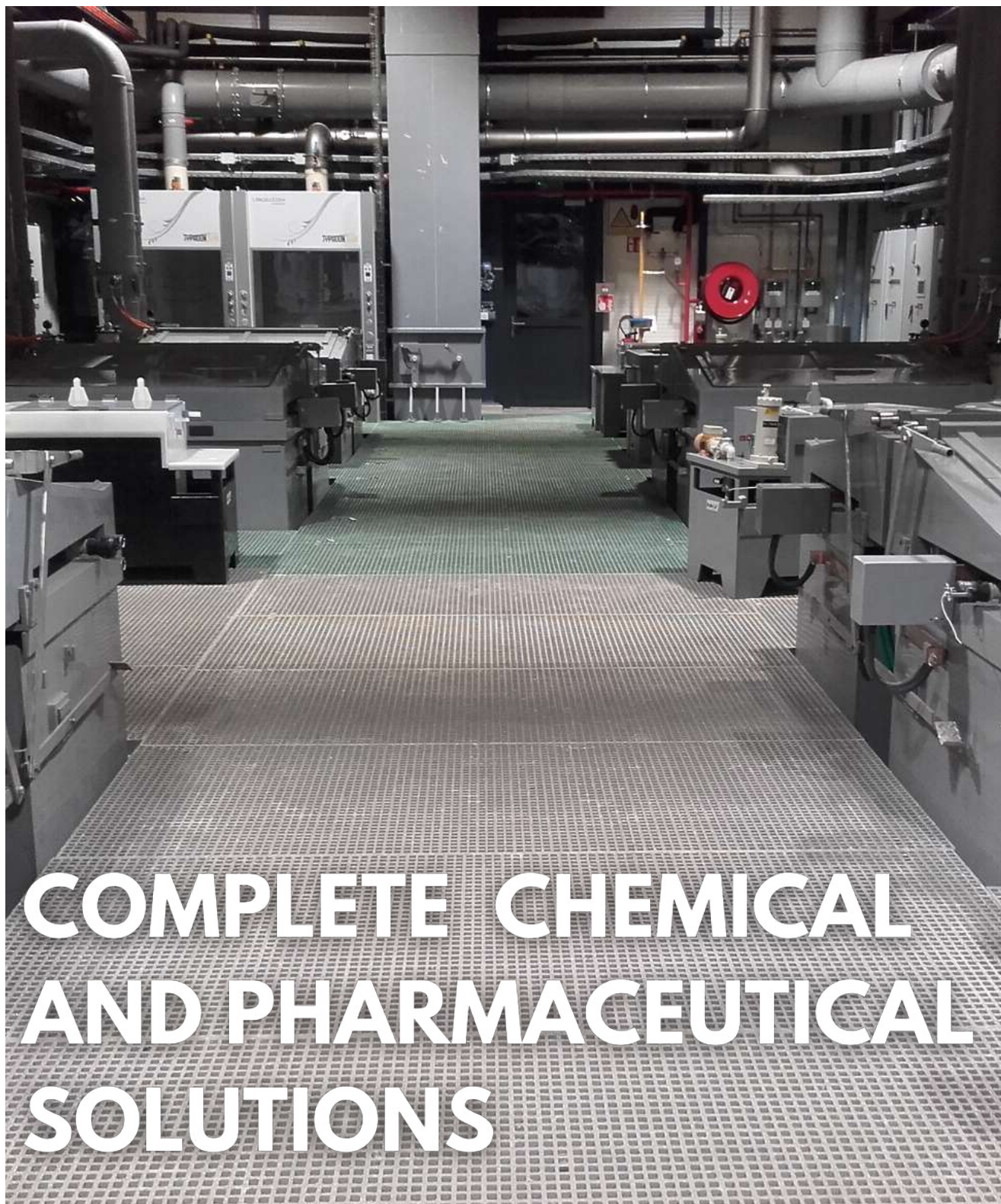


relinea[®]
Reliable, Resourceful.



COMPLETE CHEMICAL AND PHARMACEUTICAL SOLUTIONS



www.relinea.com



**Relinea is a trusted,
pioneering expert with 18
years' experience
designing and delivering
alternative composite
solutions to the
construction industry.**

**We are at the forefront of
a revolution in materials
through GRP innovation &
design ensuring a
sustainable future for all.**

Reliable. Resourceful.



Contents

Introduction	Page 04
Company Overview	Page 05
Chemical and Pharma Solutions	Page 10
• GRP Access Platform	Page 11
• GRP Open Mesh Grating	Page 13
• GRP Solid Top Grating	Page 15
• GRP Handrails	Page 17
• GRP Palisade Fencing	Page 19
• GRP Safety Access Ladders	Page 21
• GRP Stairs	Page 23
• GRP Access Hatches	Page 25
• GRP Trench Covers	Page 27
• GRP Tank Covers	Page 29
Case Studies	Page 31
Benefits of GRP	Page 35
Sustainability	Page 36



**Reliable in the services and products we supply.
Resourceful in building better GRP solutions
that will last well into the future.**

Introduction

We innovate, design and fabricate advanced technical GRP structural components to overcome weight, corrosion and slip issues. With a revolutionary approach that uses intelligent GRP design and innovative composite manufacturing to challenge the conventions of construction, we work with our clients to find unique, long-lasting, sustainable solutions.



WHAT WE DO IS DIFFERENT

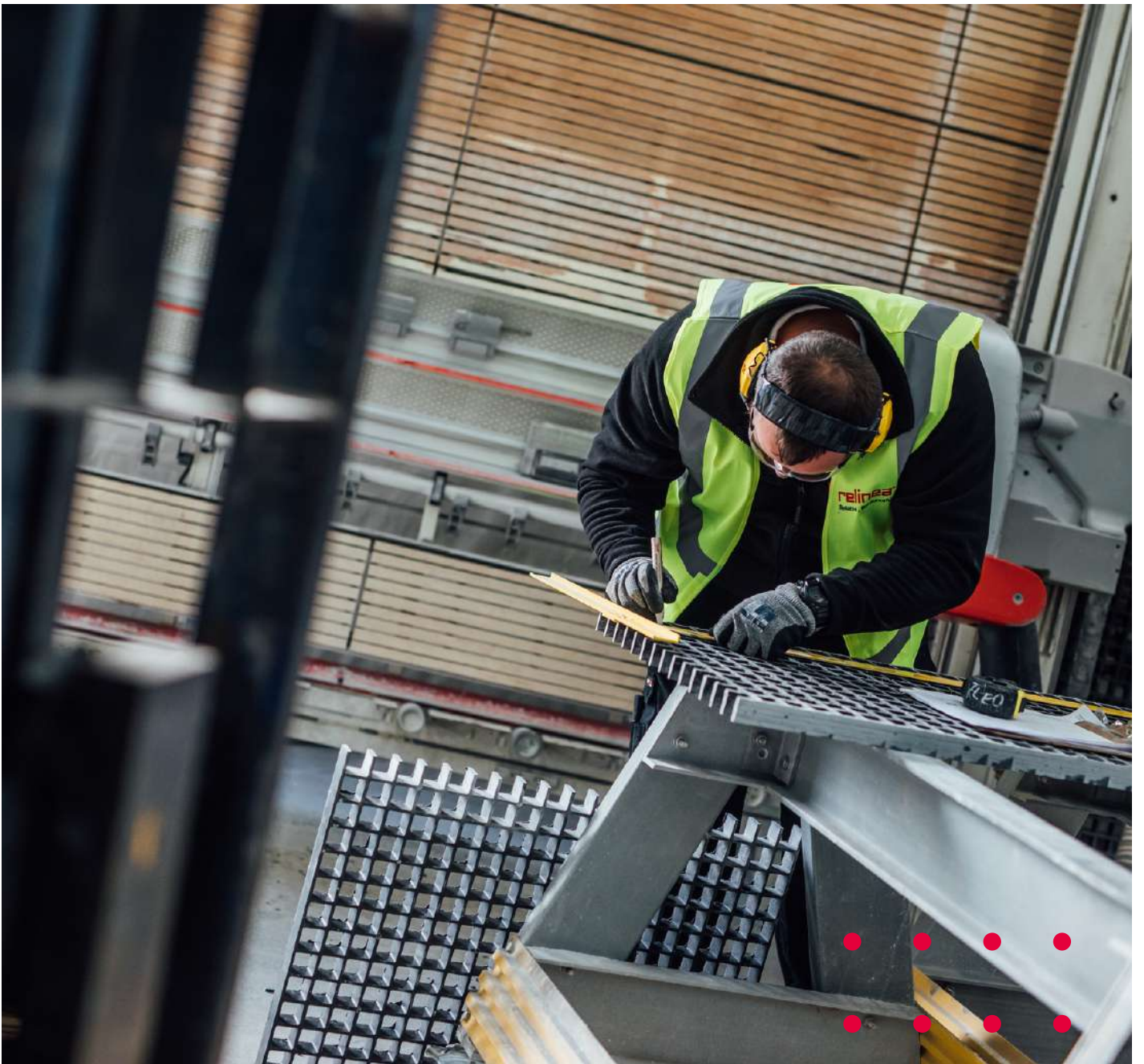
Our GRP designers, technicians, and installation teams deliver entire projects from start to finish. Our team has a deep understanding of our customers' operational and process challenges, and the expertise and specialist knowledge to design bespoke GRP solutions. Harnessing our strengths, we develop new products and services that fulfil our customer's needs and help build a better, stronger, more sustainable world.

Company Overview



The exceptional quality of our workforce provides a valuable competitive edge. We strive to employ and retain the most qualified people available and to maximise their opportunities for success through training and development. Our specialists have over 18 years of experience focusing only on fibre composites and are accredited to BS9001, RISQS, CHAS and Constructionline Gold standards.





relinea[®]
Reliable, Resourceful.



Wherever you go in our company, you'll find an uncompromising commitment to performance, innovation, customer satisfaction, and social responsibility.

Our Mission

Our mission is to work together as a team to lead the future of composites by putting innovation and our customers at the heart of everything we do.

Our Vision:

Through a focus on organic growth, driven by operational excellence and innovative products, we are committed to developing a distinctive value-creation culture that has a long-term positive impact for all our stakeholders. This culture and associated practices are embedded in our company with sound decision-making, regular investment, and world-class capabilities.



Innovation with purpose.

Our innovative approach to GRP design and fabrication reduces cost and makes installation easier.



Collaborative solutions.

We work with clients to find unique, long-lasting composite solutions.



Use our GRP experience to solve your problems.

18 years GRP experience delivers lighter, lower maintenance alternatives to steel.

Our Services

Our GRP designers, technicians, and installation teams deliver entire projects from start to finish. Our team has a deep understanding of our customers' operational and process challenges, and the expertise and specialist knowledge to design, fabricate and install bespoke GRP solutions.



CONSULTATION

We navigate our clients through their specific GRP technical issues to find composite cost reduction solutions that are flexible, long, lasting and easier to install. Our focus is engineering, not sales, which speaks volumes about our corporate philosophy



DESIGN

With one of the largest dedicated composite design teams in the sector combined with 18 years' experience in the manufacture of GRP products we are best placed to provide truly innovative, sustainable solutions.



FABRICATION

Our highly skilled composite fabrication teams use the latest technology and manufacturing techniques to deliver peerless results reducing on-site adjustment time of GRP mouldings and fabricated structures.



INSTALLATION

Our expert GRP installation team brings years of professional experience to every job, ensuring that your completed project meets our high-quality standards.

“

Every GRP project is bespoke, benefiting from our innovative fibreglass design knowledge and high quality standards.



Chemical and Pharmaceutical Solutions

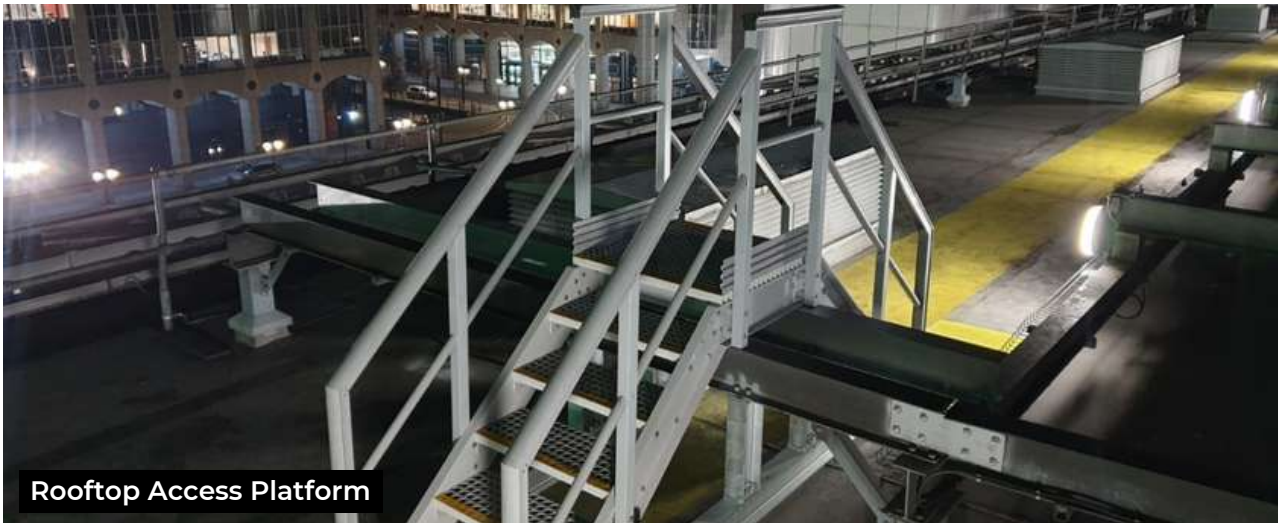
In response to the demands of globalisation, changing consumer preferences, and intense competition, the Life Sciences industry is engaged in retrofitting, expanding, and constructing new facilities. These projects and initiatives often involve intricate complexities, tight schedules, and cost constraints.

Combining our expertise in GRP Specialist Mouldings and Structural Products we can offer a vast range of GRP Products for the chemical and pharmaceutical Industries that outperform traditional materials and deliver highly durable solutions at a much lower cost.

We understand that there are many critical considerations when working in buildings for pharmaceutical or chemical use. GRP is the ideal material for these environments. Anti corrosive, non-conductive and chemical resistant - we offer a variety of resin types to suit your needs, depending on the severity of the environment.



We aim to become the preferred partner for providing intricate GRP systems in cutting-edge life sciences facilities for leading construction companies in the biopharmaceutical sector. Our capacity to deliver these services with precision, adhering to rigorous quality and safety standards, and meeting demanding construction timelines, has played a pivotal role in establishing enduring partnerships with our clients.



GRP Access Platforms

Our Pre-engineered Modular Glass Reinforced Plastic (GRP) Access Platforms, are manufactured using Re-Struct GRP Profiles. These versatile structures can solve seemingly impossible access problems.

Relinea Bespoke Structural Platforms allow for safe access and clear delineation of acceptable walking routes over pipework, cable trays, ducting, industrial machinery, gutters, and walls. Designed to make navigating surroundings less hazardous and more time-efficient, access platforms are essential for health and safety.

Durable and maintenance-free, our platforms can be manufactured with grating stairs, landings, safety handrails, and kick plates. All of our platforms, bridges, and walkways are fabricated to our customer's needs and can be custom-built to fit seamlessly in and around existing structures.

The lightweight GRP makes for easy transport, handling, and reduced load on existing structures. Quick and easy to install, our platforms are a fantastic option for use near electrical installations as they are non-conductive.



relinea
Reliable, Resourceful.





GRP Open Mesh Grating

Relinea GRP Open Mesh Grating is a versatile, durable, high-quality flooring and an excellent alternative to steel mesh grating.

Engineered to excel in a wide range of applications, this innovative grating solution seamlessly blends strength, corrosion resistance, and versatility, making it an ideal choice for the Life Sciences Sectors.

Re-Grid GRP Open Mesh Grating is designed to provide safe, robust GRP flooring access for pedestrians on industrial walkways, catwalks, and over channels. Relinea's Re-Grid GRP grating is manufactured using an embedded grit finish. This ensures that the anti-slip grit does not chip or peel away from the grating and does not compromise the slip resistance.

Our GRP grating products are lightweight and easy to handle, making for a fast and simple installation. Re-Grid GRP Open Mesh Grating is 1/3rd the weight of equivalent steel grating. Furthermore, fabrication can be carried out on-site without affecting the corrosive resistance properties of our GRP Open Mesh grating.





GRP Solid Top Grating

The Re-Deck GRP solid top grating system is a moulded one-piece GRP fibreglass grating flooring product that combines our GRP Re-Plate with our Re-Grid Open Mesh Grating. The resulting product is even stronger than our standard Re-Grid Open Mesh Flooring.

Re-Deck Solid Grating can be up to half the weight of equivalent steel decking or concrete. Hence, the Re-Deck allows for easier handling and can remove the need for costly and time-consuming lifting equipment. Another advantage to using our GRP solid top grating is its excellent impact resistance feature. Concrete can crack when under stress or heavy impact, Re-Deck solid top GRP grating eliminates this problem, therefore avoiding costly ongoing restoration.

Relinea's Re-Deck Fibreglass Covered Grating is manufactured using an Embedded Grit finish, meaning that the Anti-Slip Grit is embedded onto the top surface of the grating during the manufacturing process, forming an integral bond between the grit and the surface of the grating. This ensures that the Anti-Slip Grit does not chip off the grating and further does not compromise the slip resistance or durability





GRP Handrails

Relinea GRP handrails are an extremely durable and cost-effective alternative to steel, and they are ideal for industrial and commercial applications.

One area where the enhanced performance of our GRP Handrails can be measured quickly, and easily is with a simple touch. Our GRP handrails are warm to the touch and aesthetically pleasing. This is an important factor to consider for handrails that are being used in outdoor contexts.

Our Modular GRP Handrail System is suited for applications such as staircases, access platforms, walkway handrails and guardrails. Due to the high-strength properties of our Handrails, they are also ideal for use to protect and identify hazardous storage areas. Non conductive, non corrosive and maintenance free, our handrails are ideal for use outdoors and in highly corrosive areas.

Handrail components are produced in lightweight fibreglass sections that are easy to transport and handle. Our modular handrail systems can be prefabricated at our manufacturing facility and delivered to site for a simple and easy installation using standard hand tools, saving you time and money.







GRP Palisade Fencing

GRP Palisade Fencing is ideal for corrosive environments and as GRP is a non-conductive material.

Our GRP Palisade Fencing comes pre-assembled and is easily installed. No welding is required eliminating the need for bulky welding equipment and hot works permits. Long-lasting, durable, and easy to install our GRP palisade fencing has a multitude of benefits over steel, making it suitable for practically all environments.

- GRP Palisade Fencing Panels are a non-conductive, non-rust alternative to traditional steel fencing.
- Our GRP Fencing Panels have a high energy absorption and can be repeatedly knocked without causing permanent damage.
- Lightweight – you don't need any heavy lifting gear or specialist equipment to install our GRP Fencing – a two-person team can easily complete the job.
- The chemical-resistant resin means our fencing can be used in the toughest conditions.
- Due to its non-conductive nature GRP fencing does not have to be earthed.





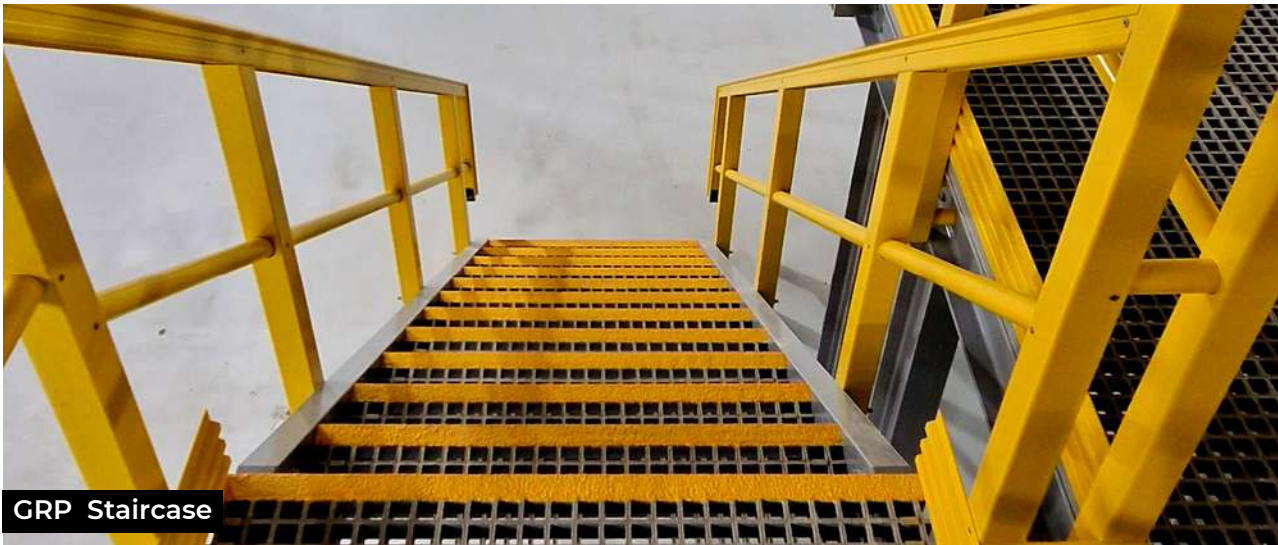
GRP Safety Access Ladders

Long-lasting, durable, and easy to install our GRP access ladders are corrosion and chemical resistant and need little or no maintenance. This makes them suitable for practically all industrial and commercial environments, indoor and outdoor.

One area where the enhanced performance of the Re-Grab GRP Safety Access Ladders can be measured quickly, and easily is by a simple touch. Our GRP ladders are warm to touch. This is an important factor to consider for ladders that are being used in outdoor contexts. As they are not subject to cold, or extreme heat, they are much safer to climb.

Relinea Re-Grab GRP Ladders are made specific to customer requirements and can be supplied with all necessary components, including a walkthrough and safety cage. All our GRP safety ladders are manufactured to BS EN ISO14122-3:2001 and BS5395-1-2010.



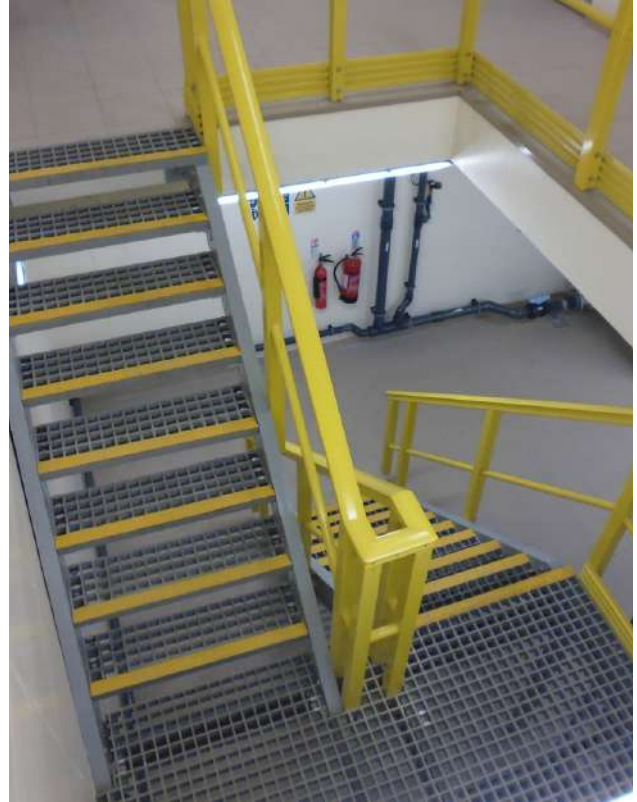


GRP Stairs

Relinea offers customers extensive knowledge and experience in the design, manufacture, and installation of internal and external staircases. Whether it's for general access, fire escape stairs, one or two steps to a doorway or platform, or a multi-story staircase, we have a solution for you.

GRP stairs are perfect for replacing slippery steel or rotten wooden steps. Manufactured using Relinea Re-Grid GRP Open Mesh Grating, the anti-slip grit does not chip or peel away from the grating and does not compromise the slip resistance. This embedded grit finish provides a steadier grip underfoot in wet, icy, or greasy conditions. The GRP grating, handrailing, and structural profiles we use to build our stairs are non-corrosive and weather resistant. GRP is warm to the touch, important for outdoor contexts.

Staircase components are produced in lightweight fibreglass sections that are easy to transport and handle. Our stairs can be prefabricated at our manufacturing facility and delivered to site for a simple and easy installation using standard hand tools, saving you time and money.





GRP Access Hatches

Relinea's GRP Access Hatches are designed to provide safe, unobstructed openings at facilities such as water treatment plants.

Our range of single person operation GRP access covers and hatches are a lightweight, cost effective alternative to steel access products. Our range of composite covers, used in conjunction with our grating range, provides safe and secure access to pumps and dry wells that are suitable in an extensive range of corrosive environments including marine and chemical.

Due to the lightweight nature of Relinea's GRP Access Hatches, installation can be carried out by only two men, eliminating the use of heavy lifting apparatus. Relinea's GRP Access Covers and Hatches conform to BS 124:1994 - Group A15.

Options:

- Fall Arrest
- Walkthrough ladder section
- Padlock
- Maximum single clear opening 1500 x 1000 mm



Raised Access Hatch



Flush Access Hatch



Gas Strut Assisted Access Hatch



Flush Filling Access Hatch



Open Mesh Access Hatch



Access Hatch With Fall Arrest



GRP Trench Covers

Relinea's GRP Trench Covers are a lightweight, cost-effective alternative to awkward and heavy steel or concrete covers.

Our range of Composite trench covers which can be used in conjunction with our GRP grating provides safe and secure access to pumps, cables and dry wells.

We can fabricate your GRP trench covers to suit any existing layout, saving you valuable installation time on site. Due to the lightweight nature of our trench covers, they can be fitted by just one or two men, avoiding heavy lifting or the need for extra equipment. The lightweight design of the covers allows for easy access when routine inspections and repairs need to be carried out.

As with all our GRP products, our trench covers are incredibly durable and resistant to corrosion. They have an excellent strength-to-weight ratio and a gritted anti-slip surface. Relinea's GRP trench covers conform to BS 124:1994 – Group A15.





GRP Tank Covers

Relinea's structurally robust and lightweight GRP Tank Covers are designed to provide effective odour control solutions for various applications in Wastewater Treatment Plants such as Sludge Tanks & Settlement Tanks. They are also ideal for protecting stored water or other liquids from contamination and evaporation.

Relinea's GRP Tank Covers can be used for:

- Odour control
- Eliminating algae growth
- Fall protection for personnel
- Protection from ingress of water or other debris

GRP tank covers have numerous benefits. Unlike steel or metal covers, there is no need to worry about corrosion, weathering, or structural instability. Lightweight and easy to install our GRP tank covers are, long-lasting, durable, non-conductive, and need little or no maintenance. This makes them suitable for practically all industrial and commercial environments, indoor and outdoor.



Case Study - GRP Chemical Flooring – CERN, Switzerland



Problem/Challenge

The process involved removal of products from the baths that would then be washed down over the grating. The result was a particularly aggressive chemical environment that would be wet for up to 8 hours per day.

After consultation into the potential risks of exposure to full strength chemical and the requirement for a 10-year warranty on the goods supplied, a vinyl ester pultruded GRP support system was considered the right solution. But due to the higher percentage of resin used in moulded products and that Relinea use very high-grade resins the specification was lowered to an Isophthalic resin for the GRP Grating.

Solution

Relinea had to design a false floor incorporating a GRP support frame system that could accommodate a uniform loading of 20 kN/m². The design had to allow for specialist fixings that were suitable for the chemical environment and all cut edges and fixings had to be resin treated. To ensure ease of installation, several site visits were carried out and the use of 3D CAD drawings provided easy installation.

Management of logistics was critical due to the location of the site and that all goods had to clear customs. The initial dispatch of goods was carefully planned to ensure all materials and tools that would be required during the 4-week installation period were dispatched.

On arrival on site our team had to coordinate with a number of other trades and ensure protection of the newly installed basin linings. Any metal fixings had to be resin sealed and any remedial work on the profile or gratings had to be chemically resealed. Levels had to be taken to ensure the flooring was flush with a concrete walkway to ensure a smooth run for trollies. Panels also had to be notched around the outside perimeter to allow for service cables to pass through.

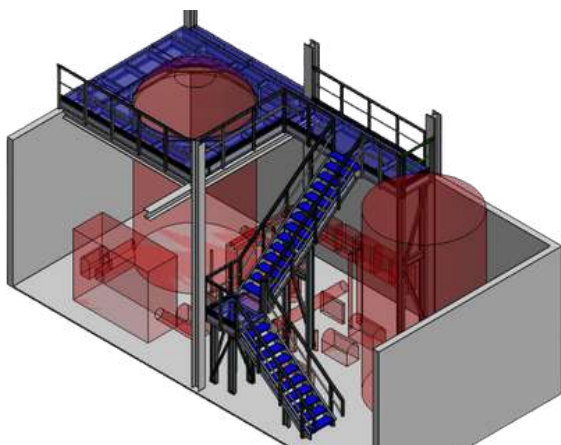


Case Study - Access Platform

For this project we designed and manufactured a customised GRP platform featuring a staircase and handrail exclusively for a confidential client. The project showcases our commitment to delivering tailored solutions for our clients.

Project Details:

1. **Structure:** Our team constructed a unique GRP platform tailored to provide access to two massive tanks. The platform includes a landing that bridges the gap between these tanks, ensuring secure and efficient access.
2. **Flooring:** For the platform's flooring, we employed Relinea Re Grid, a 38mm x 38mm mesh grating with a grit top surface. This choice of flooring ensures safety by preventing slipping, leaving no room for compromise in maintaining a secure work environment.
3. **Accessibility:** We designed the platform with user accessibility in mind. It features a meticulously crafted staircase for easy ascent. In addition, a 1100mm high handrail is securely affixed to the structure to enhance safety during use.
4. **Scale:** The towering platform reaches an impressive height of 5 meters. This substantial elevation provides our client with a unique vantage point and access, catering to their specialized needs.



Case Study - DDA Handrail

For this project we designed and manufactured and installed our DDA handrail for a confidential client in Irealnd. Our DDA compliant handrail designed to comply with part M of the building requirements. With an inherent 'warm to touch feel,' TouchSafe is a long-lasting, modular GRP handrail solution for stairs, ramps & walkways.

DDA regulations are exacting, but as an experienced DDA handrail supplier, you can rest assured that your Relinea DDA handrail design ticks all the boxes. From the continuous 42mm diameter handrail to the high-visibility finish and warm-to-touch feel, our DDA handrail systems keep your premises compliant, now and into the future.

Our handrail components are produced in lightweight fibreglass sections that are easy to transport and handle. The modular handrail systems can be prefabricated at our manufacturing facility and delivered to site for a simple and easy installation using standard hand tools, saving you time and money.

Suitable for both internal and external applications, our non corrosive handrail is UV stable and designed to withstand harsh weather conditions. Our handrail will not chip, peel or flake meaning zero maintenance. Tubular DDA fittings match the external diameter of the handrail for a smooth and continuous finish.



Benefits of GRP

Maintenance free, corrosion and impact resistant, our GRP products have considerably low life cycle costs compared to traditional materials.

GRP can be effectively used in the development of new structures to achieve a superior service life without the need for regular, costly maintenance. As we work towards sustainability goals and extending the life of products, glass-reinforced plastic can also be incorporated into existing structures to extend existing service life.

Relinea can develop solutions that have a much lower carbon footprint in comparison to traditional building materials such as concrete & steel. Built to last, GRP is the material of the future for those seeking energy-efficient, green, sustainable solutions.

Long Term Cost Savings



Maintenance free, corrosion and impact resistant, and with a life span of 50+ years, our GRP products have considerably low life cycle costs compared to traditional materials.

The Safety Benefits of GRP



Slip resistant, non-conductive, and fire retardant. Our integral grit finish offers the world's highest slip resistance for a walk-on surface. Due to their non-conductive nature our products do not have to be earthed.

The Practical Benefits of GRP



75% lighter than steel, GRP products make for an easy two man installation. Impact resistant and with a high strength to weight ratio, they are easily fabricated and handled on site.



Sustainability

Relinea is committed to using manufacturing and innovation to make the shift towards a more sustainable business. Integrating sustainability into our business model and ways of working creates value for all. At every stage of our process, we reduce our environmental impact through innovation, R&D, and waste minimisation. Early engagement through planning and design combined with robust advanced product solutions ensures a reliable and sustainable future.



Relinea is known for providing GRP products and services that continually improve the quality of life and the environment by fulfilling society's need for infrastructure including, clean water, construction, transportation, and reliable energy – in a sustainable way.



Products made from GRP can offer significant environmental benefits because of their characteristically low weight, good mechanical properties, and excellent resistance to corrosion.

RECYCLABLE

GRP waste is often shredded and processed to create a high-grade alternative for the cement industry, where it is used as a fuel and mineral raw material.

LONG LIFESPAN

The thermosetting resins used in GRP are far stronger and more durable than other plastics, giving most GRP products a lifespan of more than 50 years.

LOW CARBON FOOTPRINT

GRP's CO₂ equivalent is less than half that of a concrete bridge and approximately a third of the CO₂ equivalent for a steel bridge. As a result, GRP's carbon footprint is also very favourable.

ENERGY EFFICIENT

50% less energy is needed to produce glass-reinforced plastic (GRP) than steel.

LIGHTWEIGHT

GRP structures are 75% lighter than steel which means 50% less energy is needed for transport and assembly.

ECO FRIENDLY

GRP produces fewer greenhouse gasses and consumes less energy at the production stage than both steel and aluminum. Pultrusion takes place in a fully-closed process, which minimises the evaporation of volatile compounds, and no smoke clouds or toxic air pollutants are created.

Our Customers





relinea®

Reliable, Resourceful.



www.relinea.com



info@relinea.com



+44 (0)28 9447 0010